

DiRT4

Manual made by www.rallygamer.com

All the tools and additional info can be found at www.rallygamer.com/dirt4/tools/texture-design-tools.php

How To Extract Liveries With the NeFS Edit Tool.

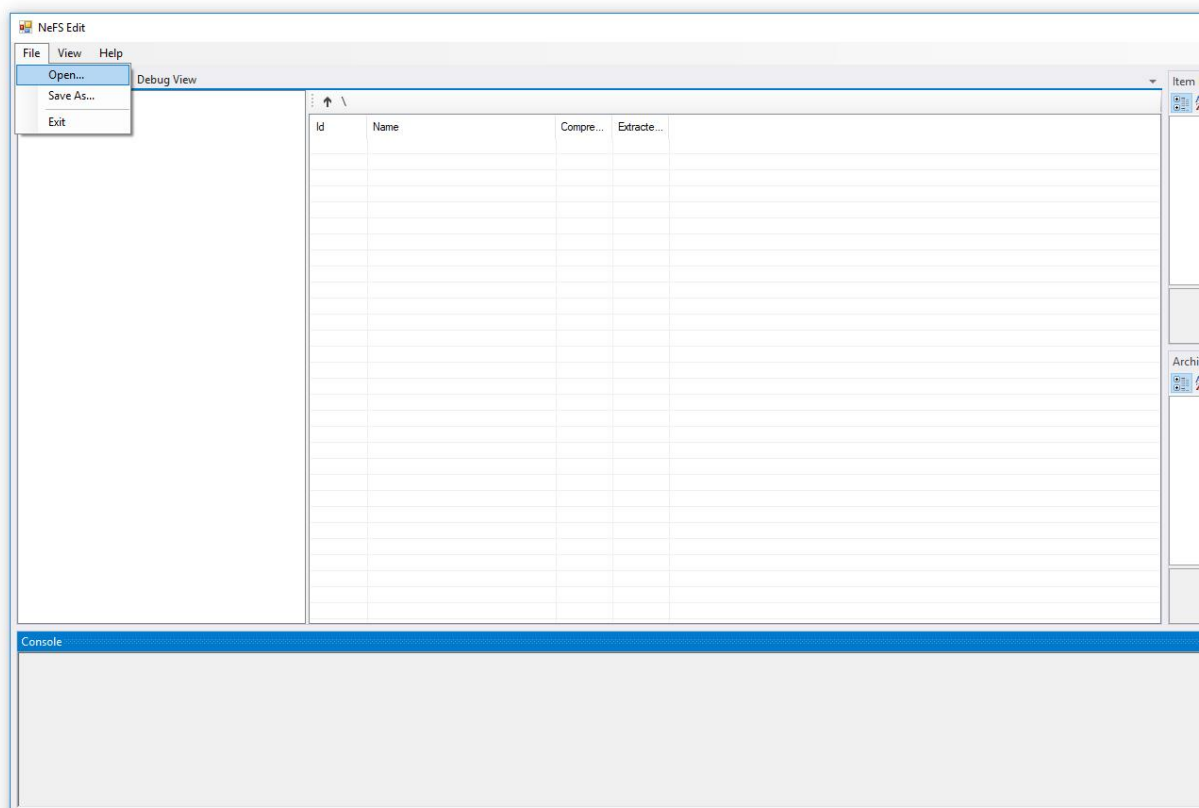
In this manual I will, as an example, explain how to extract a livery from the game for the **Mitsubishi Lancer Evo 6**. You can find the file in which the liveries are here:

C:\...Steam\SteamApps\common\DiRT 4\cars, look for the **ev6.nefs** file.

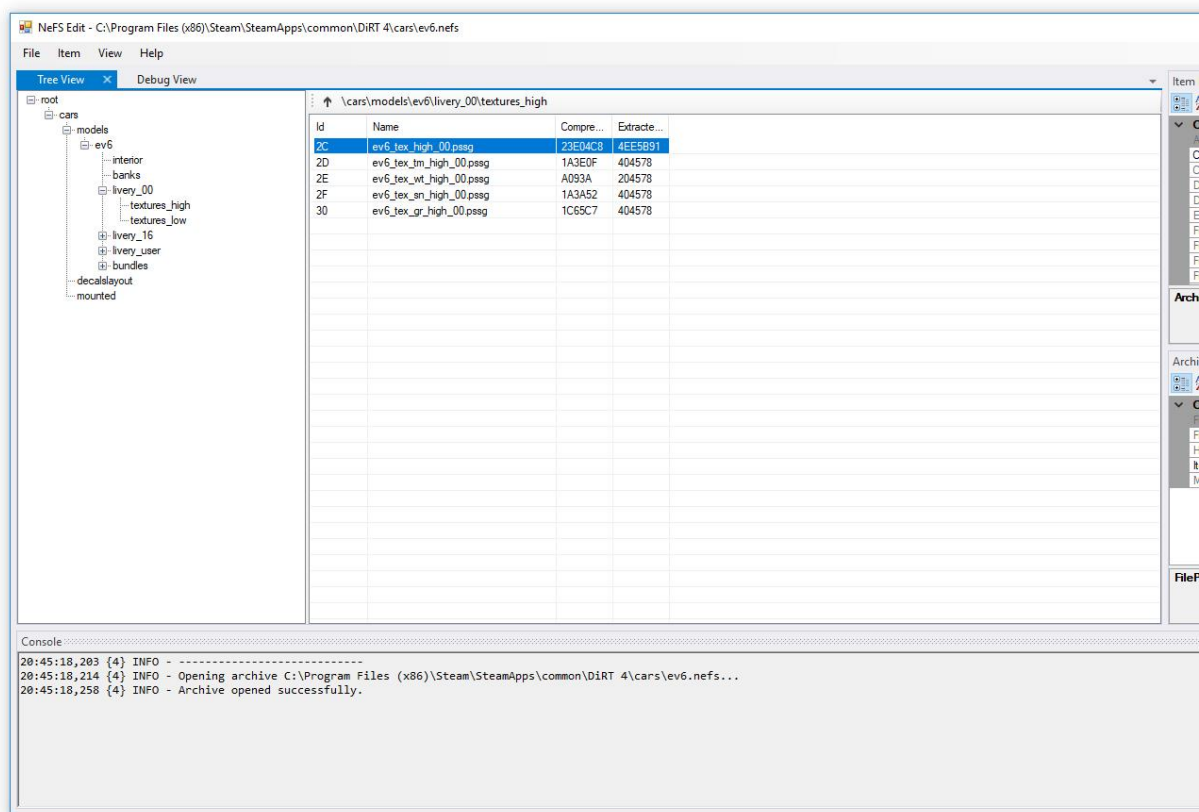
The **ev6.nefs** holds all the liveries for this specific car.

FIRST ALWAYS BACKUP YOUR FILES BEFORE EDITING THEM

1. Start up the **NeFS Edit Tool**.
2. Click **File, Open**.

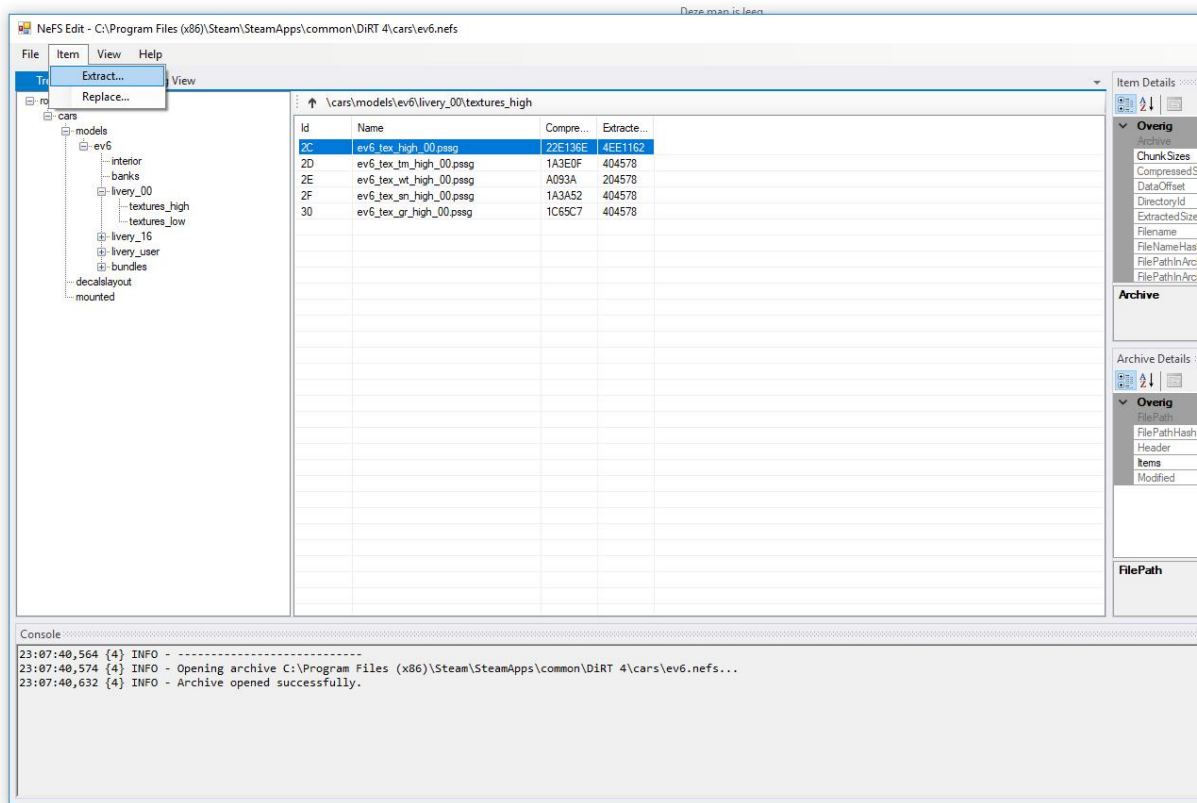


- A popup window appears, browse for the **ev6.nefs** file in **C:\...Steam\SteamApps\common\DiRT 4\cars**. Select the **ev6.nefs** file and press **Open**.
- The file is now opened in the tool.



- Browse through the root folder tree as seen above until you reach **ev6_tex_high_00.pssg**
- click on it to highlight it.

7. Next go to the menu and click **Item, Extract**.



8. Extract/save the highlighted **ev6_tex_high_00.pssg** somewhere on your pc.

9. Now you can edit the extracted **ev6_tex_high_00.pssg** with a custom livery you made. Always make use of the latest PSSG Tool.

10. Make sure you save the **.dds** files with the correct **BCn settings**.

11. All **tools, car folder names** and **BCn settings** can be found on my website, see link mentioned on page one.

12. Enjoy modifying your rally game 😊.

Visit www.rallygamer.com for more liveries, mods and tools.